

Columbia FiberArts Guild

Columbia FiberArts Guild Newsletter

Volume 51 Number 2

February 2020

LETTER FROM THE PRESIDENT

Hello Columbia Fiber Artists:

Almost Valentine's Day and I just realized I missed Groundhog Day due to Superbowl. What silly person put those on the same day? How can Daffodils be blooming when my car has a layer of ice on it? Whine, whine, whine. Actually this cold spell makes me extra happy when the sun comes out. It also lets me not feel guilty being in my studio working on projects.

I'm looking forward to the workshop next month with Sue Metzger. Still have places so consider joining me. I hear that there are places left in all three workshops this year so let's fill them up. These are the most beneficial things we do for members so let's all take advantage of the opportunities while they last.

Finally, I need to ask again for someone to step up to be Secretary. We (the board) are taking turns taking minutes as a temporary fix but we really need someone to take over this empty position. We don't bite - really!

Off my soapbox now and really excited about the March meeting. See you all there.

Regards

Gloria



Gloria Richardson

BOARD REPORTS

Treasures Report

[January 2020 Financial Report](#)

[Treasure Report October 2019](#)

[Treasures Report November 2019](#)

[Treasures Report December 2019](#)

Meeting Minutes

[Minutes December 2019 CFG Meeting](#)

[Minutes January 2020 Board Meeting](#)

[Minutes February 2020 CFG Board meeting](#)

WORKSHOP NEWS

AVAILABLE WORKSHOP OPPORTUNITIES

Registration for ALL 2020 Workshops is open!

Click here to register for the 2020 workshops!

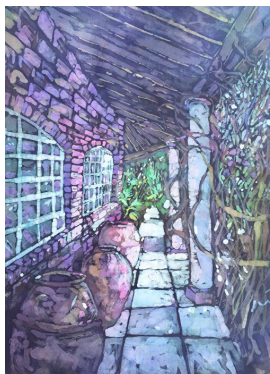
<https://www.columbiafiberartsguild.org/events.html#workshops>

Go to the bottom of the page to find the link for registering.

For questions contact Laura Lehrhoff laura.lehrhoff@gmail.com

MARCH - Batik Expressions

Susan Metzger will be here lecturing on her many years of study and experience of batik at the March meeting and giving a workshop teaching her skills in the art of batik. There are still openings for her workshop. Susan Metzger: www.susancmetzger.com



March 12 - 13, 2020, 10AM - 4PM

\$210 + materials fee: \$30

Class limited to 15 students

Class Location: St Rita Catholic Church, 10029 NE Prescott St, Portland 97220

Materials List

Participants will experiment with batik and the subtle color harmonies, the final hues a result of previous dye baths. Your creation will have hard and soft edges with your choice of where cracks will occur. The use of four colors of Deja hot water dye will be taught in specific sequences. Participants will be taught a set of tools, some traditional, and others Susan has devised over her many years with the medium.

Participants will learn how to create specific effects with wax, dyes and various fabrics, even how to "fix" errors.

In this workshop you will create and complete two batiks of 14" X 14". The first batik will be a guided image. The second will be whatever you desire - one image or multiple designs. Materials and tools will be provided, except your personal design, or image for your second batik. At the end of the workshop you will have batik images and/or fabric designs that can be enhanced by any method of fabric art.

JUNE - Out of the Ordinary & Excitingly Exploratory

There are only two spaces open for Lisa Rich's workshop in June, where participants will create 2D and 3D forms using a new low melt synthetic polyester fiber called Fosshape. Her lecture will be about experimentation and creativity. Leisa Rich: www.monaleisa.com



June 11 - 12, 2020, 9AM - 5PM

\$200 + materials fee: \$50-60 (* in Materials List)

Class limited to 16 students

Class Location: St Rita Catholic Church, 10029 NE Prescott St, Portland 97220

Materials List

Participants will transform a revolutionary 2D material called Fosshape - a unique low melt synthetic polyester fiber that when exposed to high heat methods and pressure, easily hardens into unique and textural 2D and 3D forms. Learn simple methods of construction that include hand and machine stitching, ruching, plaiting, fusing, distressing, stretching, embossing and molding, and how to incorporate other fiber techniques to create various forms. Be inspired to make your work "move", interact with viewers, light up and more. Transform your personal creative vision into 2D "paintings", sculptures, vessels, representational forms, or wearable art and costumes. Unlimited other sculptural applications

such as maquettes and basis for other art/craft disciplines, armatures for structural needle felting, theatrical applications, Cosplay, garment construction and more, means many possible creative applications and the skills for more post-workshop experimentation. Each student will be guided in the realization of how this extraordinary material can be used to enhance specific ideas in her/his/their personal creative practice. Therefore, the Fosshape skills you will learn are how to sew it, how to harden and shape it with heat, along with other manipulations and alternate applications.

SEPTEMBER - Sampler Series - An Adventure in Felt Making, & Transition to Create Wearables - Art Vest or Scarf

Patti Barker will be the lecture at the September meeting and is giving a nuno felting workshop. Her lecture will be about her fiber journey. She creates beautiful, wearable clothing. There are still a few openings in her workshop. Patti Barker: www.pattibarker.com



September 10 - 11, 2020, 9AM - 4PM

\$150 + materials fees: \$50 (Sampler Kit) on Day One plus \$30 (scarf kit) OR \$60 (vest kit) on Day Two

Class limited to 16 students

Class Location: St Rita Catholic Church, 10029 NE Prescott St, Portland 97220

Materials List

The day one workshop, Sample Series is an adventure in textural Nuno felting techniques - from simulated animal skins to roses and ruffles, you will entrap beads, learn mosaics, and create raised shapes. The Sample kit includes six mini kits with all the pieces you need to take this adventure. You will learn eight different textural techniques and come away with six 10" X 10" samples and skills to use in creating unique felted items, plus printed instructions. This workshop is designed to give you new tools for your fine art toolbox.

On the second day, you will choose either to make a gorgeous scarf or art vest, both made with luscious silk and fine merino wool dyed by Patti. The kits come with the above and a host of embellishments, plus printed instructions. The workshop gives participants an opportunity to play and use the skills learned on the first day. The designs are a great way to learn how to create felted wearables. Patti will discuss the many options when designing your scarf or art vest. The kits will have many color options to choose from.

HISTORIANS CORNER



High Fiber Diet: No Shrinking Violets
by Lynn Deal, Historian

For over twenty-five years, CFG's sub-group High Fiber Diet (HFD)* has produced original traveling art exhibits. The current exhibit, No Shrinking Violets,

is a colorful show featuring approximately twenty-five wall hangings, wearable art pieces and 3-D sculptures. No Shrinking Violets arrives on the heels of other color related themes such as red, orange and green. HFD exhibits don't always feature hue - note the recent exhibit, OMG, That's Fiber and the upcoming show, Journeys.

High Fiber Diet exhibits are similar to but different from CFG's open shows. Both types of exhibits utilize regional venues and garner community support while providing a forum for CFG artists. However, High Fiber Diet depends on a judge, known as a juror, to inspect and accept each show's entries while the guild's open show, such as 2019's Golden Threads exhibition, does not require entries be judged for exhibit purposes. Open and juried exhibits work together to create a strong understanding of what occurs each year in members' studios.

*HFD members pay \$10 in addition to CFG's membership fee. To be considered for juried competition, all fees must be paid at least three months prior to submissions. For more information, visit

<http://www.columbiafiberartsguild.org/whoweare.html#smallGroups>.

MEMBER TO MEMBER



If you would like to sign up, read the class descriptions below and CONTACT THE MEMBER GIVING THE WORKSHOP DIRECTLY.

Hand Stitching: Hardanger

Harbinger is a counted thread technique originating from Norway and is traditionally white thread on white fabric. I'm teaching this technique to the Kuwait Textile Art Assn next April and

thought some of you in our guild would like to learn how.

Instructor: Kathie R Kerler

Date: February 13th

Hours: 10:00 am to 12:00 pm

Fee: \$20, which includes the needle, threads, fabric, and hoop (if needed)

Max # participants: 6

To sign up e-mail: kathie@kathiekerler.com

Creative Cords: Accent your Quilts add punch, whimsy, and elegance or go funky with cords customized through color and style just for your quilts, accessories, or home dec

items. They look great next to the binding instead of a piping or flange. You can incorporate them into the body of a quilt.

Instructor: Kathie R. Kerler

Date: February 27th

Hours: 10:00 am to 12:00 pm

Fee: \$20, which includes tools and all types of threads and fibers

Max. # of participants: 8

To sign up email: kathie@kathiekerler.com

Using Inktense Pencils to color and enhance fabric

Inktense pencils add beautiful color to fabrics and once finished the color is permanent and does not change the hand of the fabric. I have been using them to create original images on fabric and to change or enhance both commercial fabric prints as well as hand dyed or printed fabrics. Join me at my studio and I will show you several ways of using the medium to achieve different effects, including blending and mixing colors. You will have a chance to try out these techniques and make several samples to keep. Participants will need to bring their own Inktense pencils, which can be purchased online or at local art supply stores as sets. If you are not ready to invest in a set, individual pencils can be purchased at Portland Artist and Craftsmen Supply stores. You will need at least three colors that can be mixed. If you are coming with a friend you can share pencils.

Instructor: Terry Grant

Date: February 20th

Hours: 10 am to noon

Fee: \$20, which includes fabric samples you will keep and use of brushes and other equipment and materials.

Max. # of participants: 5

To sign up email terrypocatello@gmail.com

If you would like to offer a workshop, class or demonstration please contact Terry Grant at terrypocatello@gmail.com and put "member to member" in the subject line. You can set up a workshop any time and I will get the word out to the membership. Don't be shy! It's our fun and easy way of getting together and sharing what we know.

Tips from new President-elect

Tips from your President Elect Cheri Jolivette:

Your President Elect Cheri Jolivette is continuing to share tips from the GREAT Betty Busby. This month she is sharing Betty's preferred program for drawing on an Apple or android tablet. Betty suggests:

Tayasui Sketches Pro at <http://tayasui.com/sketches/>

Steps:

1. Import your photo(or drawing) into the software.
2. Resize your photo to fit the drawing area- then click "OK"
3. Add a transparent layer on top of your photo image.
4. Use the marker tool to draw desired lines on top of photo.
5. Remove the photo image and refine your lines with the eraser tool.
6. Upload your finished drawing to your computer.

Betty used a silhouette cameo 3 to cut her images. Silhouette Cameo 4 is now

available.

SPECIAL INTEREST GROUPS of CFG

CREATIVE WEARABLES

Creative WEARABLES

This month's theme on February 17th is all about upcycling. Jane Wolfe will share about her upcycling journey-why upcycle, selecting and upcycling men's shirts, including a demonstration and samples. Everyone is invited to share samples of their own upcycling projects at Creative Wearables.



Jane Wolfe
jwolfe@quantum
leaders.com

It's all about hats! Lottie Smith will be the featured speaker on March 16th. Bring 1-2 of your favorite hats and Lottie will talk to us about the art of hats-selecting them, wearing them and making them.

Creative Wearables meets the 3rd Monday, monthly Sept to June 10am-noon at Crossroads Community Church, 2505 NE 102nd Ave., Portland OR 97220. Go to south parking lot, grey building, food bank signage.

If you would like to receive the Creative Wearables newsletter or have suggestions for the group, email jwolfe@quantumleaders.com or text me at 949-278-2165. Thanks, Jane Wolfe.

HIGH FIBER DIET

Journeys Coming Your Way

High Fiber Diet Friends - I have finally gotten started on a piece for Journeys. What about you? I have been thinking of ideas for months, and finally one surfaced that makes me smile. And it all began with a title. Does that ever happen for you? I am in sketch mode now and then the hunt for fabrics will begin. I expect this piece will involve fusing - a technique I don't often employ. Each artwork has to present a challenge right?

Hope you will all participate in this challenge. Entries will be open May 14 and close July 14.

Get to work!!!

Please direct questions to Jill at hoddick@up.edu

CURRENT EXHIBIT



Gerri Congdon

No Shrinking Violets is the current HFD exhibit. The underlying theme was the color purple. Our next venue is ARTreach Gallery, 1126 SW Park Ave. Portland. The exhibit will run from January 12 to February 23. The gallery is open from 10 am to 2 pm, Monday - Friday, 9 am - 1 pm on Sunday and Closed on Saturday.

High Fiber Diet is a group that focuses on getting members' fiber art publicly shown with the intention of selling it. The group creates annual themed shows that travel to selected venues. Each show committee decides the theme, creates a prospectus, selects jurors and informs HFD and CFG members about the exhibit schedule. The venue committee finds venues, keeps records about the shows, and encourages professional practices.

HFD meetings are scheduled mid-day for every meeting! Meetings are now all on the third Tuesdays of February, April, May, July, August, October, November at 1:30 p.m. at the Crossroads Church in Portland, unless otherwise noted.

SURFACE DESIGN GROUP



Opportunity !

Surface Design meets the first Wednesday of each month except for December and January. We are looking for CFG members who would like to present their work to us. We all have a different style, different voice, different technique, and we would love to see what your doing or what you've done. Please share with us 15 minutes, 30 minutes, 5 minutes. Your work needs not to be finished just needs a SURFACE.

We love to share in Surface Design. We enjoy a share and tell each month and then sometimes go out for lunch after. Inspiration is what we seek from each other.

Come join us, 10:30, Mill Ends on Western Blvd. Beaverton. We are in a room on the right halfway through the store.

Months available to share are- March, April, May, September.

Come join us.

Contact Karin Graves at karinagraves2@frontier.com.

ANNOUNCEMENTS AND BRAGS

Karen Miller has three quilts accepted to Ocean Gems II in Yachts Feb 14-16.



Tide pool by Karen Miller

Two quilts are showing in
Marine Food Webs
Feb 3-March 12 at Giustina
Gallery in OSU La Sells
Center.



Emily Dickinson--The Moth if Amherst

Kathie Kerler's artwork
entitled "Emily Dickinson--The
Moth of Amherst" has been

selected to be featured as a traffic signal box
wrap in Pompano Beach, Florida. The artwork
was originally created for the international
traveling exhibition, International Poet
Challenge. The 20" square will be transformed
into a 5'x2'x4' image.

Quilters Anonymous Quilt Guild 2020 Quilt
Show:



Beauty & Blossoms & Bugs,
OH MY!

The beauty of the natural world
inspires quilters to create
amazing quilts, and more than
500 of them will be on display
at the 2020 Quilters

Anonymous show, appropriately named,
Beauty & Blossoms & Bugs, OH MY! .

The show is Friday through Sunday, March 13-15, 2020 , at the Evergreen State
Fairgrounds Events Center in Monroe, WA. Ruth Van Dyke, a long-time QA
member, is the featured artist.

Show hours: Friday and Saturday: 10 am to 5 pm; Sunday: 10 am to 4 pm
Admission: \$9, good for all three days; \$5 admission per person for bus groups
Discount available for bus arrivals, Contact: Kelly Milici at 425-355-4511 or
email kelmilici@gmail.com

For more specific information: www.quiltersanonymous.org
or email quiltshowinfo@quiltersanonymous.org

CFG StyleShow

Our CFG Group Creative Wearables group will present a Style



Sherry
Doty

Show at the Quiltfest Northwest Polka Dots & Spots at the Clark County Quilt County Event Center at Noon, Saturday, April 11th.

Please come and support our Creative Wearables group at this quilt show. We will be presenting our group challenge "Dare to Lead" at this style show. We have great new looks, and quite a few of us will be modeling our garments. We hope you all can join us at this show.



Come to The Everett Quilt Show 2020
and be a **Material Witness**

The Everett Quilt Show is a Pacific Northwest Regional Show held this year on May 1 & 2, 2020.
Show hours are Fri & Saturday 10-5.

The Show is at the Edward D. Hansen Conference Center in Everett Washington.

Quilt Entry closes March 31, 2020. Entry is open to everyone in both judged and non-judged categories.

WWW.EverettQuiltShow.com

Member Advertisements



According to Columbia Fiber Arts Guild Standing Rules: Members may place a small no-cost ad in one newsletter a year for their fiber-related business. Only Fiber arts related ads will be accepted. Contact newsletter chairperson for submission requirements. 8/16

CFG CALENDAR OF EVENTS

Next QUARTERLY MEETING

MARCH 11, 2020 QUARTERLY MEETING 10AM - 12 Noon

9:00 AM Doors open

10:00 AM Meeting starts

Lecture: Susan Metzger, "Batik Expressions"

Congregation Neveh Shalom

2900 SW Peaceful Lane, Portland, OR 97239

Guest Admission Fee: \$15 which may be applied to membership cost.

For more details, go to our website and find the calendar of events - [CFG Calendar](#)

FACEBOOK PAGE

CFG Facebook Group!

If you still haven't joined, and would like to, just click the following link: [Join CFG Membership on Facebook](#) and look for the button that says "join group", click and wait for approval, then start posting!

Remember this is a closed group and only paid members of CFG may join. Your posts will be seen only by members and cannot be shared outside the group page.

OTHER CLASSES AND EVENTS

Ongoing: Eugene Textile Center (ETC) offers a full slate of classes. To see the schedule, [click here](#)

Ongoing: Textile Learning Center at Mission Mill Museum, 1313 Mill St., Salem. Studios available for students and weavers. The facilities include various multiple harness looms, a surface design printing table, textile tools, and a resource library. Also offered are independent study programs in weaving, knitting, bobbin or tatted lace, and rug hooking. For information, [Click Here](#)

Ongoing: Gail Harker Creative Studies Center The center moved to LaConner, WA in September 2011 and offers certificate and diploma courses and short classes with masters in the textile arts. They now also offer online courses. For information, [Click Here](#) or [Email](#) or 360.279.2105

SIGN UP FOR AMAZONSMILE

CFG is now a member of the AmazonSmile program. This program allows 501 (c) (3) charities, of which we are one, to receive .5% of the purchase price on most items bought through Amazon. It is simple to do, and a great way to painlessly supplement our budget. In order to make it easier to understand, click on this link smile.amazon.com/about to learn about how you can participate, and look for the AmazonSmile button that will take you directly to their shopping site. Use the Smile program every time you shop on Amazon! Click the image below to make CFG your charity of choice.



The Fine Print

Please send items for publication in the newsletter to: [CFGNews](#) or columbiafiberartsnews@gmail.com

The Columbia FiberArts Guild meets quarterly in March, June, September and December. No newsletter is published in those months. The newsletter is published seven times a year: October, November, January, February, April, May

and a combined issue in July/August. Deadline for articles is around the 10th day of the month of publication.

2019-2020 Executive Board and Committee Chairs:

President: Gloria Richardson morninggloryg@gmail.com

President Elect: Cheri Jolivet Jolivetec@hope.edu

Secretary: Open

Treasurer: Joanne Carpenter jokittens@gmail.com

Past President: Paula Benjaminson paulabenjaminson@yahoo.com

Exhibits: Open

Historian: Lynn Deal ideallyspeaking@yahoo.com

Membership: Margaret Blake singsew@comcast.net

Membership database: Chris Brown sienna5@comcast.net

Newsletter: Deb Sorem columbiafiberartsnews@gmail.com

Outreach: Kathie Kerler Kathie@kathiekerler.com

Program: Laura Fendel jazzfens13@gmail.com

Laura Lehrhoff laura.lehrhoff@gmail.com

Program Elect: Karen Miller nautilusfiberarts@gmail.com

Publicity: Open

Webmaster: JudithQuinn cfgwebster@gmail.com

CFG Board Meetings

Meetings are held monthly on the first Monday when there is no quarterly meeting and are open to the membership to attend. Contact the President for more information.

Committees are: Exhibits, Historian, Membership, Newsletter, Outreach, Programs, Publicity and Webmaster

Minutes of meetings are posted in the CFG Newsletter.