



Columbia FiberArts Guild

• NUMBER 2 • • VOLUME 52

January 2021



ARTWORK: Iris by Terry Grant

LETTER FROM OUR PRESIDENT Cheri Jolivette



Cheri Jolivette

My photo is my
impersonation of
Ruth Bader Ginsburg
for our Creative

Happy New Year

Let us hope that this year will end better
than 2020. I would like to see all of you
CFG members again.

Wearables *virtual Dare To Lead* fashion
show.

Because of covid, we will have two international speakers this year. We don't have to pay international travel expenses, so the workshops and lectures are less expensive. While Rosalie Dace's workshop is full, all Guild members may listen to the 2 hour workshop introduction for only \$30. Please sign up for this lecture on the website. How many workshops do you take, that you never finish the project that was started in the workshop? If this sounds like you, then by signing up for the lecture for only \$30., you won't feel any guilt. Do remember that the workshop is in February, so this is your last

reminder.

Our other international speaker is Lisa Walton, from New Zealand, who will be our June speaker.

Our website looks so good, but it could even be better....

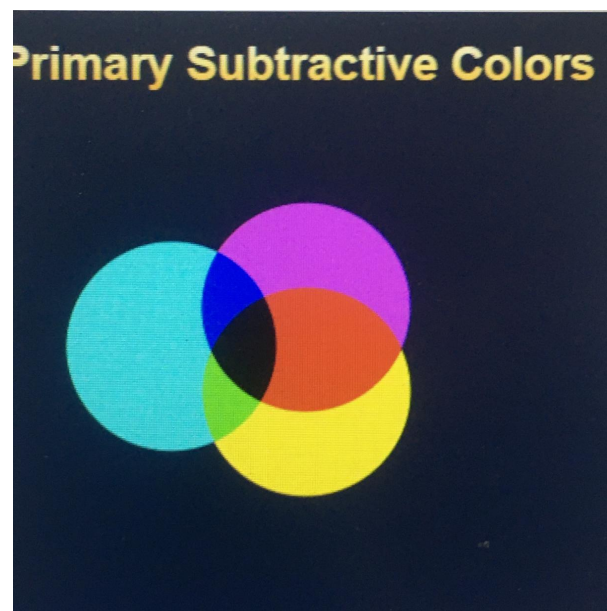
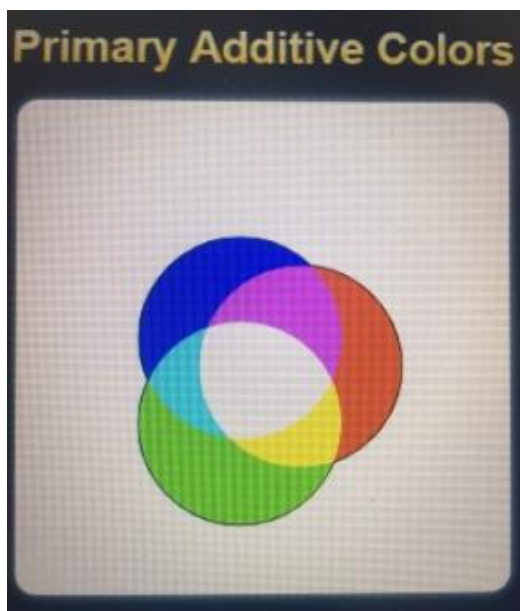
I do need your help, though. We are ready to add an online exhibit to our CFG website, but we do NOT have an Exhibits Chair. Please would one of you offer to be Exhibits Chair!!

Even if you only want to do the online part of the job, the Board would be very happy if you would be willing to help.

At the Dec. meeting I explained **why our sky looks blue and sunsets are reddish**

Think back to pictures of our astronauts on the moon. Those pictures showed the sun and other stars as white and the sky as black. Things on the surface of the moon looked white and shadows were gray. The moon has no atmosphere. On Earth, however, we have an atmosphere. The light coming from the Sun hits particles from our atmosphere and the various wavelengths(more later) of light are deflected in different directions. Oranges and reds are deflected perpendicularly, and the light blues are deflected almost straight back(our blue sky). In early morning and evening, we see the oranges and reds in our sky. Light follows the physics primary additive colors; colors red, blue and green are primary colors. If two of these primary colors are mixed, they make up the secondary colors of yellow, cyan and magenta. If all three primary colors of light are mixed, they make up white light. Theatres use these principles in their lighting.

I have also included the physics primary subtractive colors(more at the next meeting).



Please review the minutes from the January board meeting and the December Quarterly meeting which members will be asked to ammend and or approve at the March Quarterly meeting which will again be via zoom.

Minutes from December 2020
Quarterly Meeting

Minutes from January 2021 Board
meeting

Please review the Treseasures report from the January Board meeting.

Treasurers Report January 2021

FUTURE PROGRAMS



Sign up for a Rosalie Dace Lecture **Skin Deep** which is about creating transparency.

Date: **Tuesday, February 9, 2021**

Place: **zoom**

Time: **9:00-12:00 PM**

Cost: **\$30**

Signup: <https://www.columbiafiberartsguild.org/workshops>

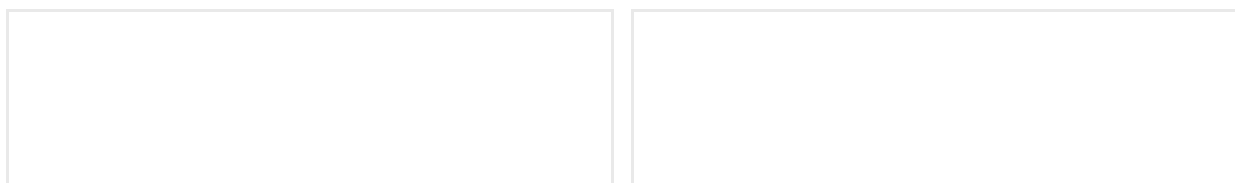
Click on Register. Please make sure you have an everbrite account. Register at <https://www.eventbrite.com> If you have questions or problems contact Doug Garnett at cfgwebster@gmail.com

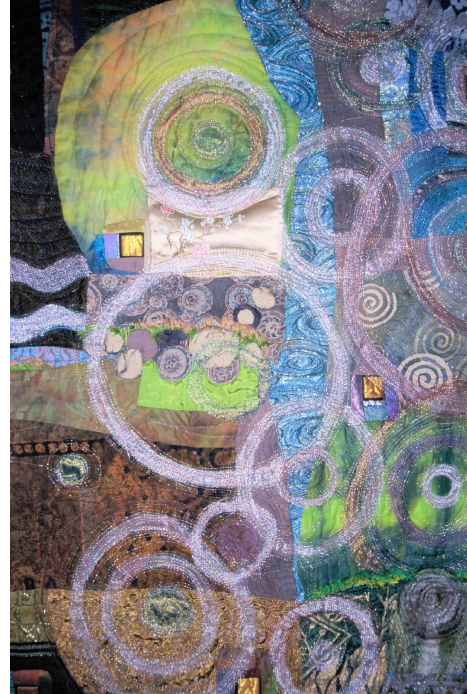
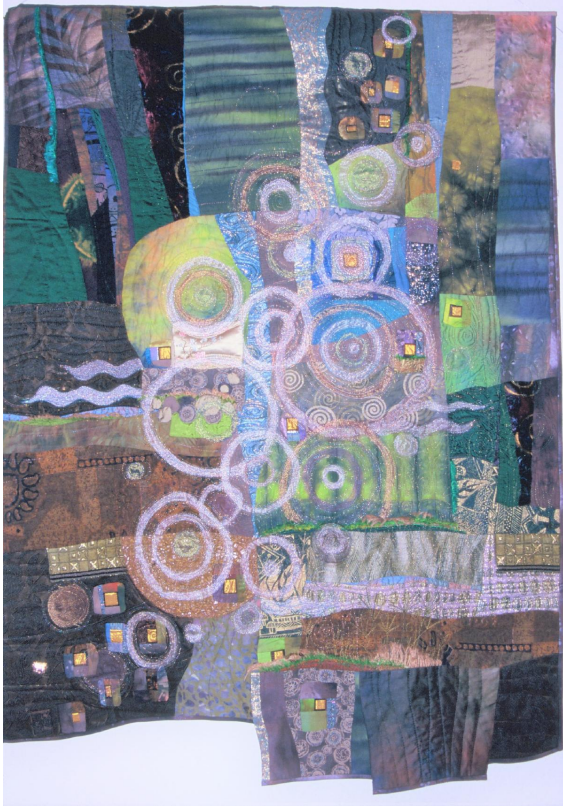
CFG is excited that our upcoming February online class Skin Deep with Rosalie Dace is full. This class focuses on the issue of showing transparency in quilts. There is plenty of room for you to sign up for the lecture alone. Her lectures are fabulous and we have made a special arrangement to share the lecture independent of the class.

For the class members, Karen Miller will send a supply list soon as well as a more detailed explanation of how Rosalie plans to organize the class online.

Rosalie will give the assignment at the end of the Tuesday lecture, then we will work together on Zoom the next day and a week later, with the ability to ask Rosalie questions during the three hour session, and she will arrange individual critiques which we can all hear.

Photo Album of works by Rosalie Dace using transparency





Almost Forgotten Never Told.
Full and detail Rosalie Dace



Moon Woman. Rosalie Dace



Elements: Water. by Rosalie Dace



Detail Handwork by Rosalie Dace



Detail Handwork by Rosalie Dace

KEEP INSPIRED AND LEARNING

ONLINE CLASSES from Laura and Karen

Explorefiber.com This site has fiber videos and fiber labs, free. On the home page you can easily find free lessons along with the videos and labs. You may become a member at many levels by hitting "Register".

Pixeladies.com This site has several on line classes to learn photoshop classes in February, March and April. Two are \$70 and one is \$125.

Creative Spark creativespark.cylinder.com This site has many on line video classes. Some are on specific dates, others will have access for up to a year. About a dozen to choose from. Prices are ~\$5 to \$180.

Stitchin' Post. stitchinpost.com Videos and on line classes given by Rosalie Dace and Jean Wells. Prices are \$15 to \$325. Some classes are specific dates.

Sarah Ann Smith www.sarahannsmith.com Thread Coloring the

NEWS FROM HIGH FIBER DIET

JOURNEYS
HFD newest exhibit at
the Pacific Northwest
Quilt and Fiber Arts
Museum in
la Conner, WA



The Isle of Skye
by Leotie Richards



Anywhere the Wind Blows
by Terry Grant

High Fiber Diet's **Journeys** has opened at the Pacific Northwest Quilt and Fiber Arts Museum in LaConner, WA. This lovely three story Victoria home filled to the brim with quilts and other fiber arts

makes a wonderful destination if you are wanting an adventure to Washington. The town of LaConner, and several other nearby towns have shops and museums and such to explore. Please call ahead for reservations and see the website for other information during this COVID period. <https://www.qfamuseum.org/> or phone 360.466.4288 for further information. Journeys will be up through January 31st.

Click to visit [qfamuseum.org](https://www.qfamuseum.org/)



The Best Way to Travel
by Mary McLaughlin

CREATIVE WEARABLES GROUP



Current Challenge: Layered, Wild and Reused.
by Joanne Carpenter

I bought a new car - a bright orange Honda Fit. I did my own tiger striping on it. Then I decided that I needed a coat to match my car. I made a coat and hat from tiger printed fleece that was part of a Halloween collection. It will also work as my project for the Creative Wearables

Meetings will again be held virtually at Zoom café. Call in at 9:45-10:00 am and be ready to share the projects you've been working on for the last few months. Invitations with the address will be sent out the week before. If you aren't already on the mailing list, contact Jane Wolfe at jwolfe@quantumleaders.com.

Upcoming Virtual Shows: Our "Dare to Lead" style show is now virtual.
[CLICK HERE TO VIEW ON UTUBE](https://youtu.be/iu9C44EpO5w) or copy and paste <https://youtu.be/iu9C44EpO5w>

Everyone is invited to stay in touch and share projects on our Facebook page at [Creative Wearables Group](#).

TIPS FOR YOU FROM THE VICE PRESIDENT



Zoom Zoom!!!!

Our lives have turn upside down in the past year with social isolation! However, by using the computer application called ZOOM, we have been able to stay connected with family, friends, and wonderful workshop teachers!

If you are new to Zoom, there is wonderful information on How to Get Started at Zoom.com, look under Support for topics and answers to frequently asked questions.

If you have used Zoom, here are some tips to optimize your experience:

Good lighting is essential! Natural light is best. Arrange where you sit so that natural light (or decent artificial light) is in front or to the side of your face.... NEVER behind you. Light behind you creates you being only a silhouette.

People can see your entire background! You want people listening to what is being said so for privacy sake, keep it simple! A wall behind you about 4-6 feet is ideal.

Avoid glass framed pieces behind you that will catch light glare. Avoid anything busy behind you or anything you don't want someone to zoom in on! A lovely piece of your artwork behind you would be a great background.

Look forward to seeing you at our next Zoom meeting!!!!

Susan

OUTREACH COMMITTEE

HELPING OUR GREATER COMMUNITY

An interest in making Walker/Wheelchair Bags has surfaced and here is a refreshed pattern for your use. As you make the bags, Sharry Olmstead IS collecting them for our local Veterans. In addition, look closer to you at local Retirement/Rehab Communities. Lottie S. put the pattern on the CFG Facebook page also. In these uncertain times, thank you for the kindness for others. Take good care, continue to stay safe, celebrate your work, be inspired with our change of seasons and know YOU have the capacity to strive and thrive through the challenges of these times.

[Click here for the revised pattern instructions](#)

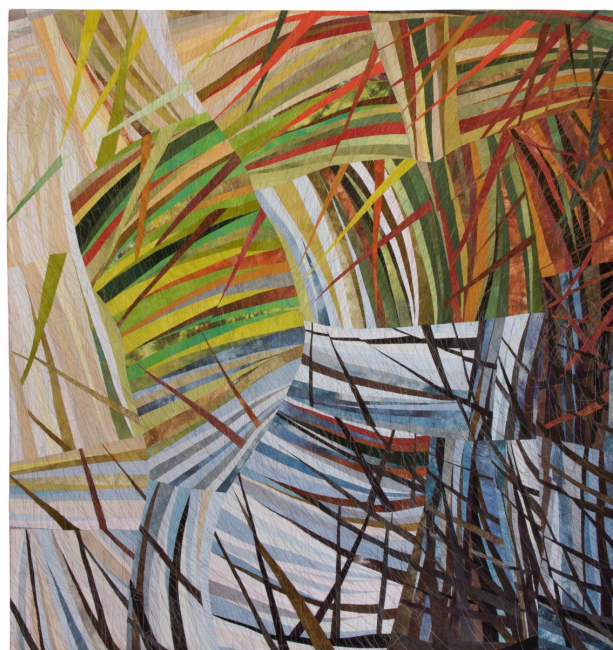


MEMBERS WORK ON EXHIBIT

Bonnie Bucknam's quilt is in Quilt Visions 2020

Bonnie Bucknam's quilt *McCallum Spring* is part of the Quilt Visions 2020 exhibit at the Visions Art Museum in San Diego. An online gallery and interviews with the artists are available on the museum's website.

visionsartmuseum.org/quilt-visions-2020/

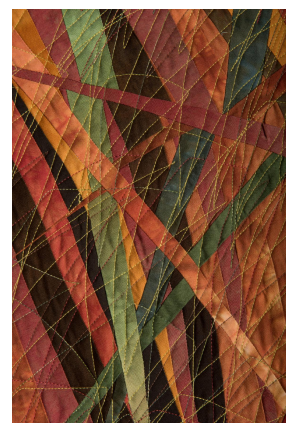


Photos, full and detail

McCallumSpring, c 2019 Bonnie M. Bucknam

66" w x 70" h

Photos by Hoddick Photography



Mary Arnold at Quilt National



Mary Arnold is happy to announce that her quilt, Road Less Traveled, has been accepted for Quilt National '21. She has to admit to being over the moon to have, for the second time, a quilt accepted in Quilt National. Due to publication restrictions, she will not be able to show an image of her quilt in the newsletter until the exhibit opens. When that happens in 2021, she will post a photo of it in the CFG newsletter.

Making Progress on Art Installation "Weaving Community Together"

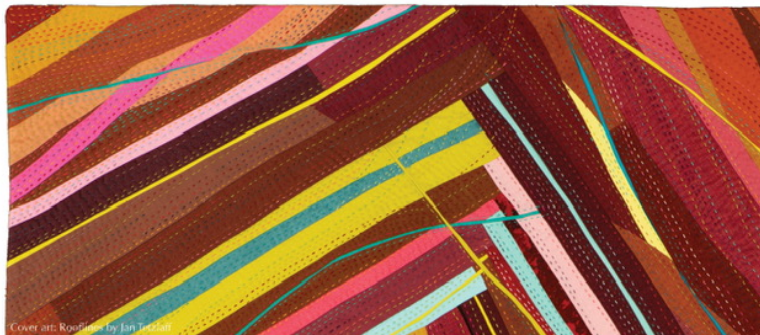


Linda Hansen

The progress on the "Weaving Community Together" art installation for the Aloha Community Library is coming right along. Linda Hansen and friends - neighbors, book club sisters, friends, and CFG members met on Linda's deck for 5 months. Working on tables 6' apart and wearing masks, the weavers worked strips of fabric onto 2' sections

of chicken wire. The completed piece will be approximately 20' x 14'.

Meeting new and old friends in a safe environment while touching textiles and sharing stories was just what we all needed during these unusual times.



The artwork in the image is
"Rooflines" by Jan Tetzlaff.

HABITAT: Studio Art Quilt Associates | UMPQUA VALLEY ARTS
Exhibit Dates: November 6 - December 24, 2020



The SAQA Oregon regional show, Habitat, has opened at the Umpqua Valley Arts Association in Roseburg.

Many CFG members have art work in this exhibit. The Habitat exhibit will remain at UVAA until January 31.

If you can't make it to Roseburg for a scheduled viewing, check their website, www.uvarts.com regularly. They will be posting a video tour of the exhibit, a video conversation with the Juror, Michael Fisher, the Executive Director of Maude Kerns gallery in Eugene, and a panel discussion with some of the artists. These videos will be posted throughout the duration of the exhibit.

For more information on the Habitat exhibit, visit the SAQA Oregon website at www.saqaoregon.com.

Reminder: Each CFG member is allowed one small personal advertisement per year.

Early American Flax Wheel for Sale



This wheel was my great grandmother's and it carries so many memories. When my brother shipped it to me, it still had the roving attached, from the days my grandmother demonstrated it for me (I would have been 8-9 years old.....) (1950??)

Evaluation by Ron Antoine Your wheel resembles somewhat a Shaker style flax wheel very popular in the New England area and throughout the east coast, Pennsylvania etc. Definitely not a wheel from Germany or other Germanic countries. The wood u shaped arm with the metal hooks is not original to your wheel and was made much later and not of the style one would attribute to the American flax wheel. Your wheel style was popular from the late 1700s to shortly after the American Civil War..

I am asking \$150, but am negotiable to the right wheel-lover!!!! I can be contacted via email, or phone (503-260-0595). I live in West Linn, Oregon.

The Fine Print

Please send items for publication in the newsletter to: [CFGNews](mailto:CFGNews@columbiafiberartsnews@gmail.com) or columbiafiberartsnews@gmail.com

The Columbia FiberArts Guild meets quarterly in March, June, September and December. No newsletter is published in those months. The newsletter is published seven times a year: October, November, January, February, April, May and a combined issue in July/August. Deadline for articles is around the 10th day of the month of publication.

2020-2021 Executive Board & Committee Chairs

President: Cheri Jolivet
President Elect: Susan Allen
Secretary: Lottie Smith
Treasurer: Joanne Carpenter
Past President: Gloria Richardson
Exhibits: OPEN
Historian: Lynn Deal
Membership: Carolyn Walwyn
Newsletter: Deb Sorem
Outreach: Katie Walwyn
Program: Karen Miller
Program Elect:
Publicity: OPEN
Webmaster: Doug Garnett & Judith Quinn Garnett

CFG Board Meetings

Meetings are held monthly on the first Monday when there is no quarterly meeting and are open to the membership to attend. Contact the President for more information. Committees are: Exhibits, Historian, Membership, Newsletter, Outreach, Programs, Publicity and Webmaster. Minutes of meetings are posted in the CFG Newsletter.

Creating with FiberArts together for over 50 years . . .

